



WELCOME TO VINARCHY ADEALAIDE OFFICE

We're so glad to have you here!

**Level 10, 10 Franklin Street
Adelaide SA 5000**



10/10 Franklin Street,
Adelaide SA 5000



Welcome to GPO
Exchange Tower



A little bit about our home

10 Franklin Street

Designed by renowned Architects Hassell and Fitzpatrick Partners, GPO Exchange was completely refurbished in 2021 and comprises a 19 level A-Grade tower with 24,500 sqm of commercial office space, incorporating the rich history of the Telephone Exchange building.

Major tenants include the South Australian Government's Attorney-General's Department and BHP Billiton Olympic Dam Corporation.

GPO Exchange is located at the true heart of the Adelaide CBD and, as part of the GPO Precinct delivers unrivalled business and amenity for the precinct community. With an engaging and connected lobby experience, GPO Exchange has a strong focus on technology to enable an active workforce, wellness for its occupants and a diversity of work places and spaces.

Charter Hall aims to provide tenant customers with an exceptional workplace experience and at GPO Exchange, we are creating a quality, modern and technologically advanced office building unrivalled in Adelaide.



Preserving the integrity of the renowned precinct, the revitalisation has restored an integral part of Adelaide's history. First opened in 1883, GPO Exchange features leading technology and innovation - making it a place of exchange once again.



GPO Exchange connects Adelaide's most advanced office space with the iconic Victoria Square and premium retail spaces such as Waymouth Street and Central Market.



GPO Exchange is central to the integrated and thriving precinct. It is conveniently positioned amongst the city's best restaurants, cafes, shopping districts, gyms, childcare centres and parklands.





Getting here

Our office is centrally located within the Adelaide CBD and is well serviced by public transport being close to the City's main bus corridors, the tram line and the Adelaide Train Station. There are a number of transport options available for you to reach the office. Continue for details on car parking.



The majority of Adelaide's bus network make use of the Grenfell Street-Currie Street Corridor or run along King William Street.



There are two tram stops near our office – see the map below. For more information on tram routes visit [Adelaide Metro](#).



The Adelaide Railway Station is a 10 minute walk from the office. For more information on train routes visit [Adelaide Metro](#).



The compact nature of the City means it is very walkable .



Our office contains end of trip facilities so cycling could be a good option. Speak to Concierge for more information.



On street parking for motorcycles and scooters is available in Victoria Square, just across the road from the office building.



Getting here



Car parking

On your first day, your allocated building access card will come with a discount barcode for Care Park, Henry Waymouth Carpark, 100 Waymouth St on the back.

Please follow the below instructions regarding the discount barcode:

1. Pull a ticket on entry and park in any vacant casual bay
2. Make sure to take your entry pass with you as you will need to when returning to the car park
3. Before collecting your vehicle scan the entry ticket and provided staff pass at one of the two pay stations. If a receipt is required once the entry ticket is scanned press the receipt button on the front of the pay stations a message on the screen will change from No to Yes
4. Make payment via either Card or Cash. If making payment via Card there is a surcharge which is advised on the front of the pay stations
5. Once payment has been processed make sure to keep the entry ticket as you will need this to scan at the exit the exit the car park
6. Collect your car & drive down to the exit
7. Scan your paid entry ticket in one of the two exit stations to exit the car park
8. Make sure to hold onto your supplied staff pass as this can be reused multiple times. The entry ticket can only be used once.

We request that the staff passes be used at the pay stations onsite not the exit station as the staff passes do not scan correctly at the exit stations.

Do not park in a reserved bay with a listed registration. There are some bays within this car park which have a Reserved Sign with a red Casual sign in the middle – anyone can park in these bays. If it is a Reserved sign with either a vehicle registration or nothing on it please make sure that you do not park in that bay. Please also be aware that if you leave your vehicle overnight, your discount is no longer valid.

When you arrive

Welcome! When you walk through the doors, continue straight towards the back of the building and you will find our Concierge desk. Sign in on the tablets at our Concierge and the friendly team will provide you with a temporary access pass.

If this is your first day, you will need to nominate your Line Manager (or designated person) as your employer contact, including their name and phone number, and they will meet you at Concierge.

If you are already an Accolade employee and visiting the Adelaide office, you can swipe your temporary access pass at the security gate. Be sure to check what lift you are allocated to take – as it will automatically take you to that level (no pressing needed!)



The amenities



Bike Storage

Ride your bike into work and know that it's safely stored! Limited spots available, speak with our Office Manager for details.



Cafe

Yes – we have a café on our Ground Floor Lobby! Download the 'Charli' App to pre-order your barista coffee!



Security

Be confident that you're safe at work with great security, including dedicated Concierge and floor-only access.



End of Trip

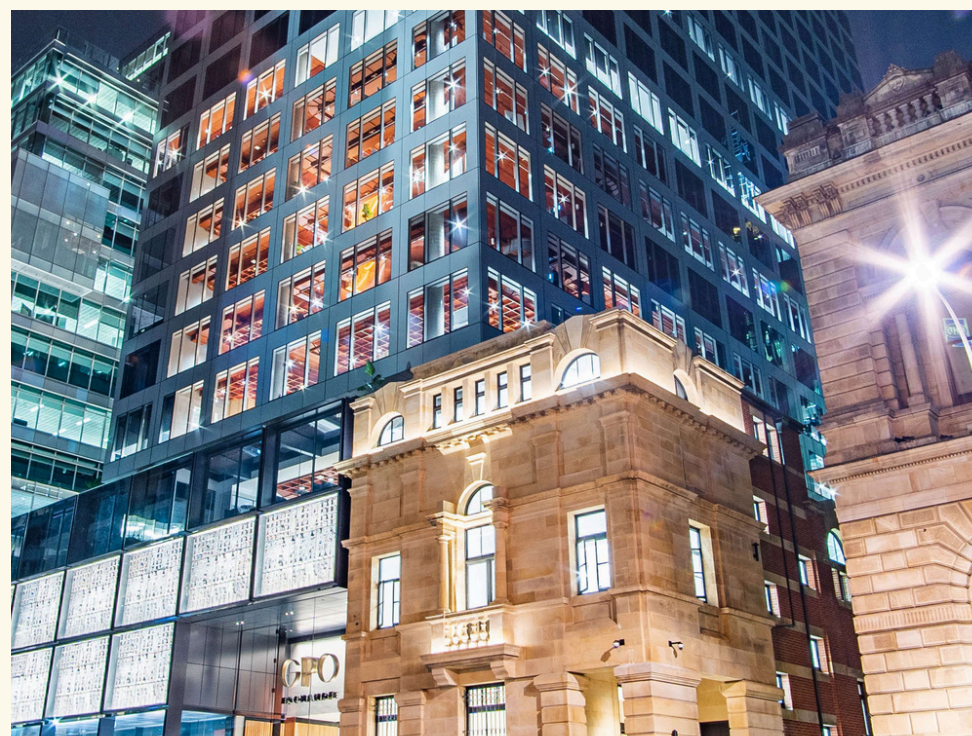
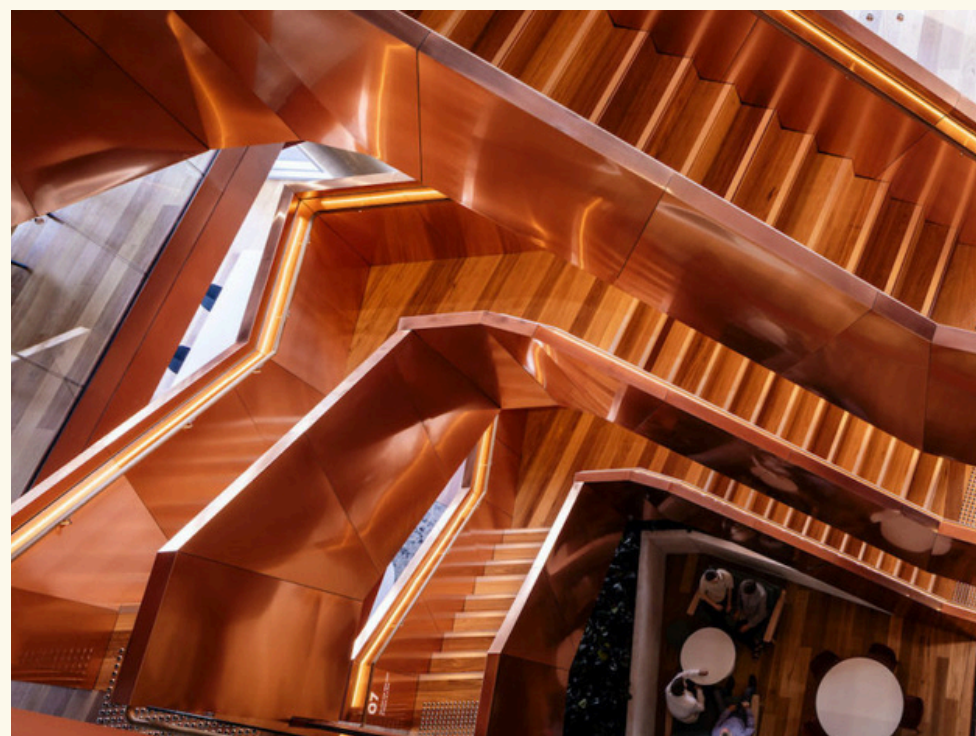
Shower and refresh using the fully-stocked end of trip facilities available. See Concierge for more details.



Transport

There are an array of options available to get to and from the office, and move your way around the city!





Social scenes

Located within Adelaide's vibrant inner-city lifestyle, restaurant, cafe and bar scene, 10 Franklin Street offers unmatched social amenity for everyone.

From the largest undercover fresh produce markets in the Southern Hemisphere, The Adelaide Central Market to top end bars – everything you could want to see, do, hear, eat or drink is within reach of our office.



Some suggestions

Casual Dining

Luigi Delicatessen
(43 Franklin St)
Public Café
(12 Franklin St)
Sit Lo Vietnamese
(2/11 Waymouth St)

After work drinks

The Gallery
(30 Waymouth St)
The Collins Bar
(233 Victoria Square)
Lady Burra Brewhouse
(4 Topham Mall)

Fitness

Goodlife Adelaide City
(81 King William St)
F45 Adelaide CBD West
(Currie St)
Yoga Theory
(1/181 Angas St)

Medical

Royal Adelaide Hospital
(1 North Terrace)
City Medical Centre
(1/80 Grote St)
Adelaide Health Care
(43 Carrington St)

Shopping

Adelaide Central Market
(44-60 Gouger St)
Rundle Mall
Rundle Street
Topham Mall

Fine dining

The Meat & Wine Co
(39 Currie St)
Press* Food & Wine
(40 Waymouth St)
eleven
(4/11 Waymouth St)

Childcare

Rainbow Zebra Family Day
Care
(5/121 King William St)
Lady Bird Learning Centre
(121-139 Grote St)

Postal

Australia Post – Ground
Floor of our building
(2/10 Franklin St)!
Australia Post Rundle Mall
(59 City Cross Arcade)

